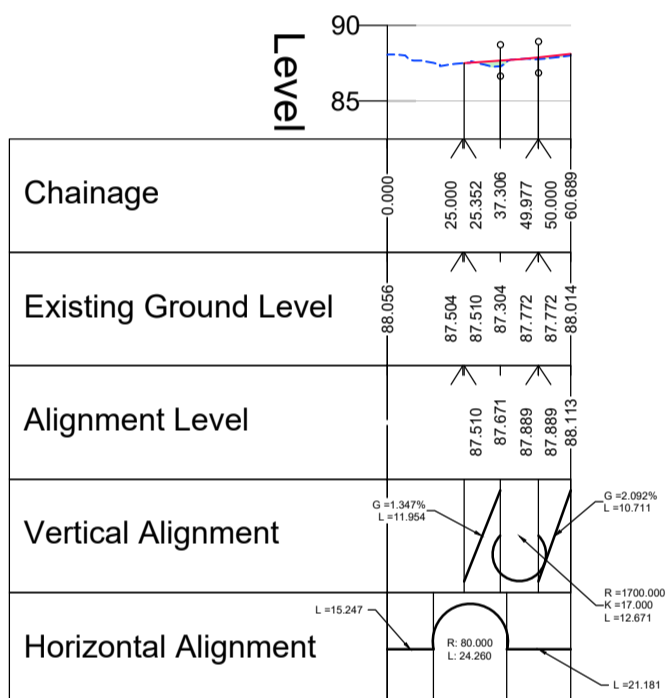


By reference to the Works Plans (Documents 2.3A and 2.3B) and Schedule 1 of the Development Consent Order this longsection shows the following highway works:

- Works No. 6 (part); and
- Works No. 14 (part).

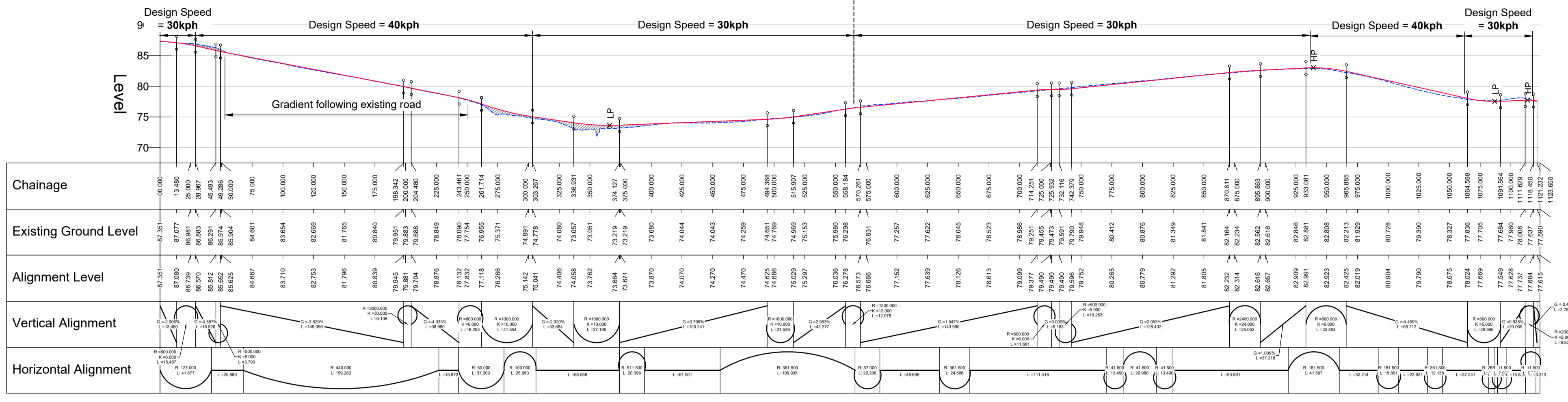
ACTIVE TRAVEL LINK (SECTION A) LONGSECTION
SCALE: H 1:2500, V 1:500. DATUM: 85.000



EMG2 SITE ACCESS CL LONGSECTION
SCALE: H 1:2500, V 1:500. DATUM: 85.000

By reference to the Works Plans (Document 2.3A) and Schedule 1 of the Development Consent Order this longsection shows the following highway works:

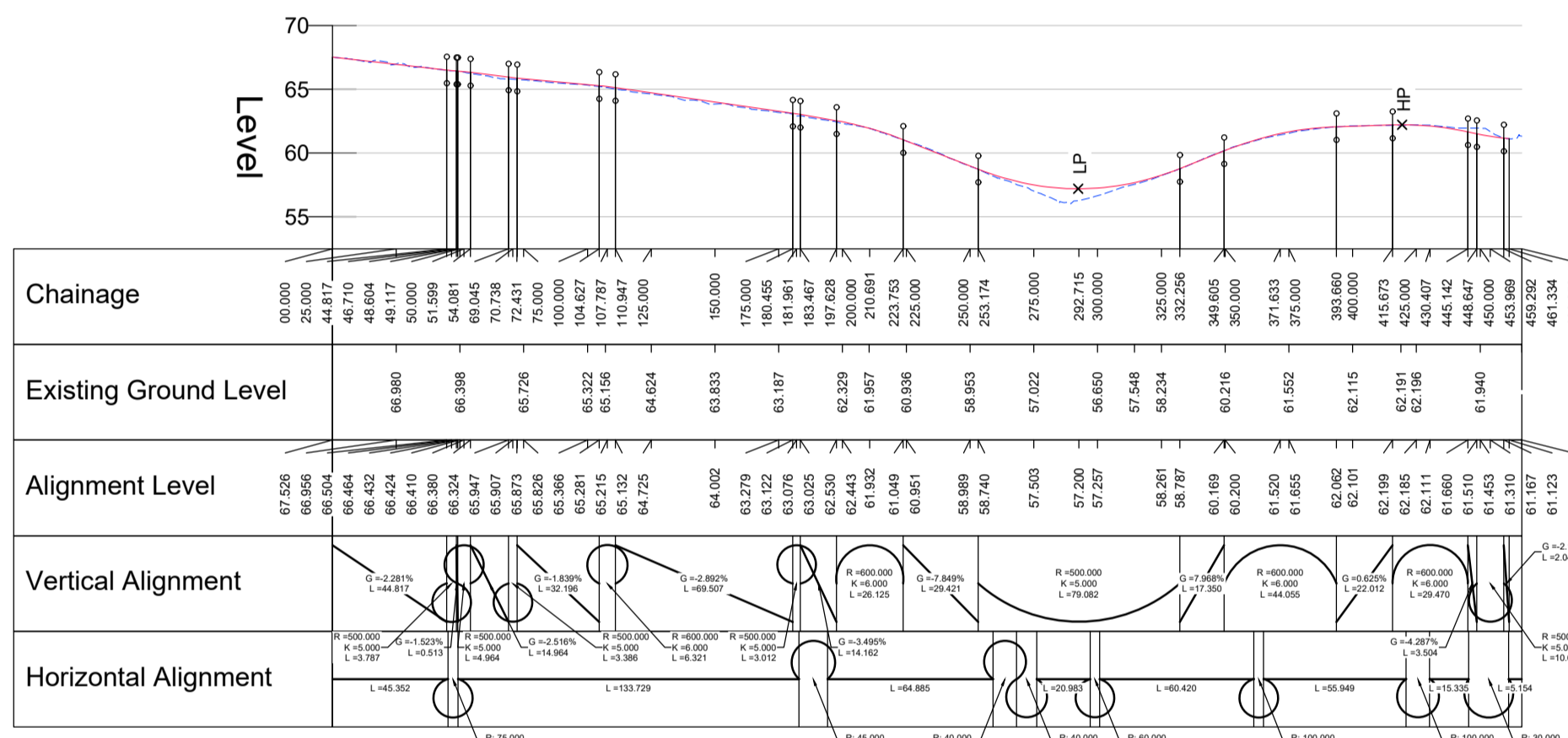
- Works No. 6 (part).



ACTIVE TRAVEL LINK (SECTION B) LONGSECTION
SCALE: H 1:2500, V 1:500. DATUM: 70.000

By reference to the Works Plans (Document 2.3B) and Schedule 1 of the Development Consent Order this longsection shows the following highway works:

- Works No. 14 (part).



L57 SHARED USE CYCLE TRACK PROFILE
SCALE: H 1:2500, V 1:500. DATUM: 55.000

By reference to the Works Plans (Document 2.3B) and Schedule 1 of the Development Consent Order this longsection shows the following highway works:

- Works No. 19.

Notes

- All dimensions in metres unless noted otherwise. All levels are in metres Above Ordnance Datum (mAOD).
- The height of proposed bridges, embankments and depths of cuttings are indicative subject to the limits of deviation referred to in the order.
- The proposed works including their specific alignment will be subject to detailed design within the limits of deviation identified on the works plans and as described in Article 4 of the development consent order.

Refer to document DCO 2.8A, 2.8B Highway Plan General Arrangement for location of profiles on this drawing.

Legend

- Existing ground level
- Proposed ground level
- Area of cutting
- Area of Fill
- Departure from standards
- HP High / Low point

Rev	Date	Details of issue / revision	Drw	Rev
P05	26.05.26	Active travel link alignment updated	DF	SRH
P04	08.10.25	Notes amended and Works No. references added	SRH	SRH
P03	31.07.25	Issued for DCO Submission	JFP	SRH
P02	24.06.25	Dwg frame update, minor highway revisions	MS	SRH
P01	15.06.25	Issued for information	MS	SRH

ISSUES & REVISIONS



THE EAST MIDLANDS GATEWAY PHASE 2 AND HIGHWAY ORDER 202[]

Drawing Title
HIGHWAY PLANS LONG SECTIONS SHEET 3 ACTIVE TRAVEL LINK, L57 FOOTPATH UPGRADE AND EMG2 ACCESS

Scale	1:2500	Drawn	M.S
Size	A1	Reviewed	S.H
Regulation	6(2)	Document	DCO 2.10C

Drawing Status
DCO SUBMISSION

Drawing No. EMG2-BWB-HGT-A453-DR-H-0651	Revision P05
---	------------------------